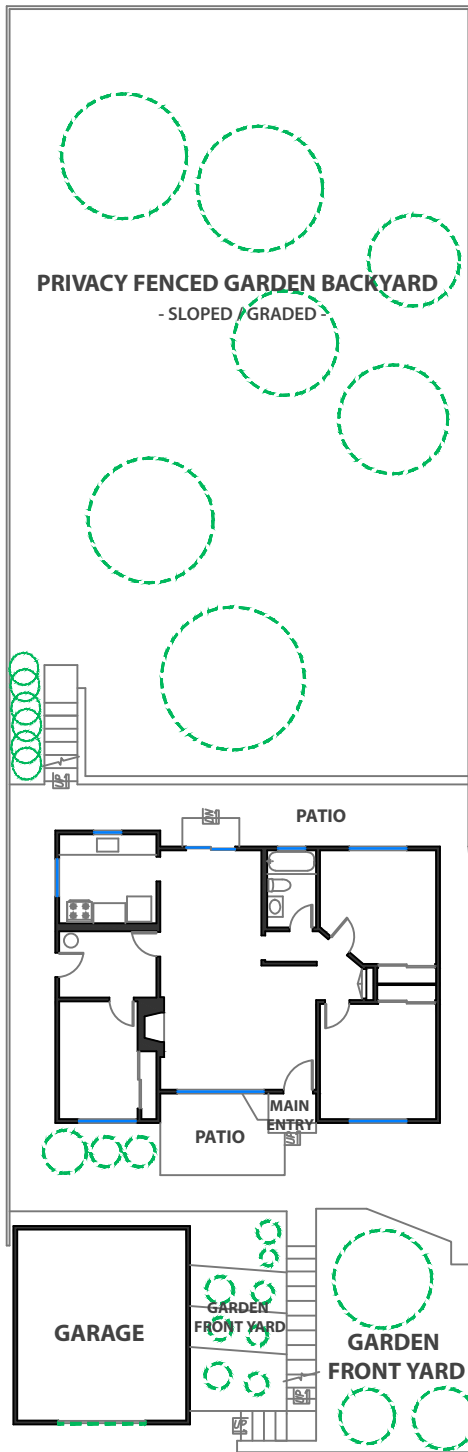
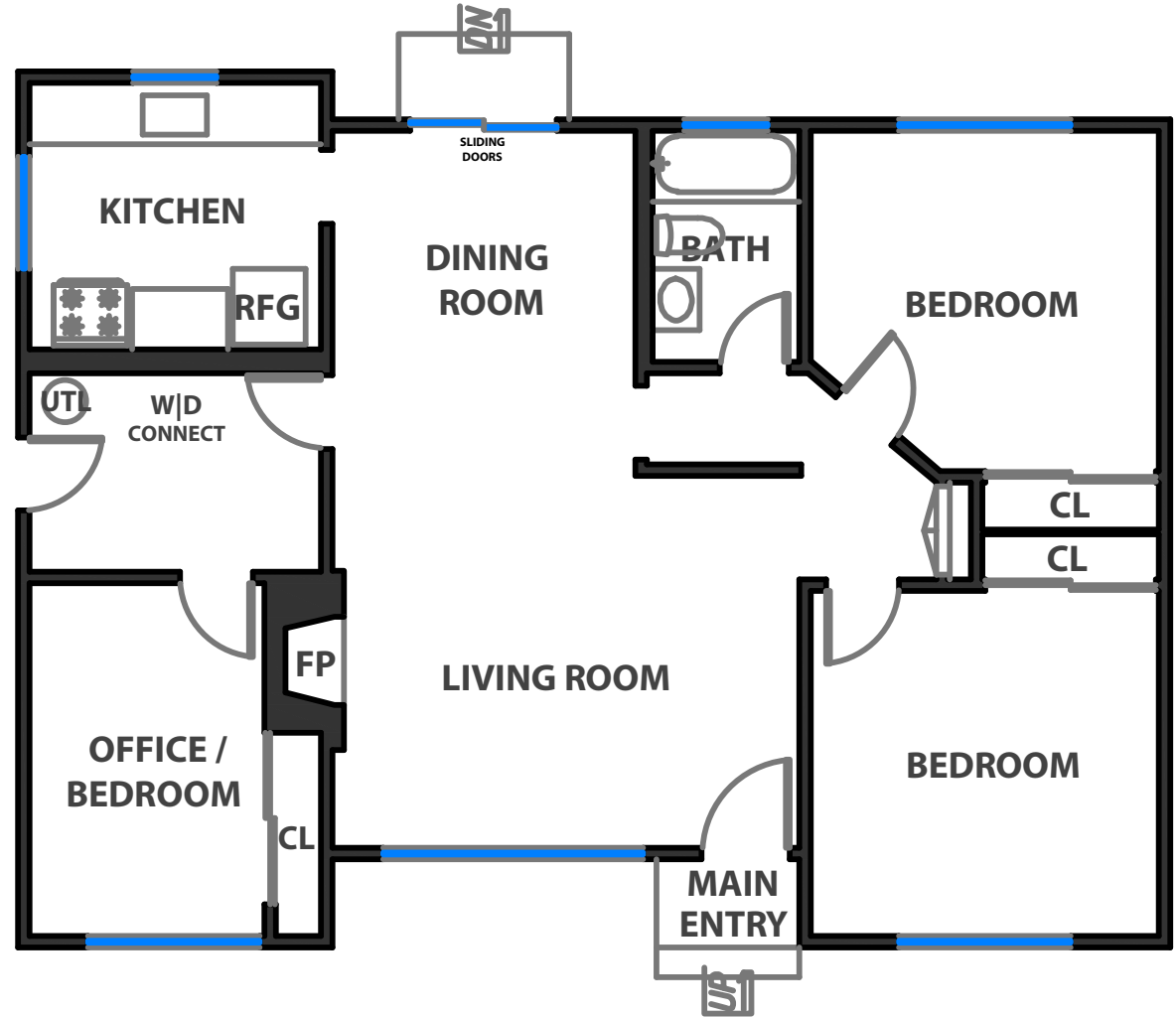


6631 SARONI DRIVE

OAKLAND, CALIFORNIA



VIEW w/ SITE PLAN



PROPERTY SQF INFORMATION

LIVING SPACE
Square Footage:

1076 Sq Ft*

* Main Level

NON-LIVING SPACE
Square Footage:

364 Sq Ft*

* Garage

APPROXIMATE TOTAL LIVING & NON-LIVING SPACE

Square Footage:

1440 Sq Ft*

RENDERING BY OPEN HOMES PHOTOGRAPHY
ALL MEASUREMENTS ARE APPROXIMATE AND MAY NOT BE EXACT. DO NOT RELY ON THE ACCURACY OF THIS FLOOR PLAN WHEN DETERMINING THE PRICE OF A PROPERTY OR MAKING DECISIONS REGARDING BUYING OR SELLING OF PROPERTIES WITHOUT INDEPENDENT VERIFICATION.